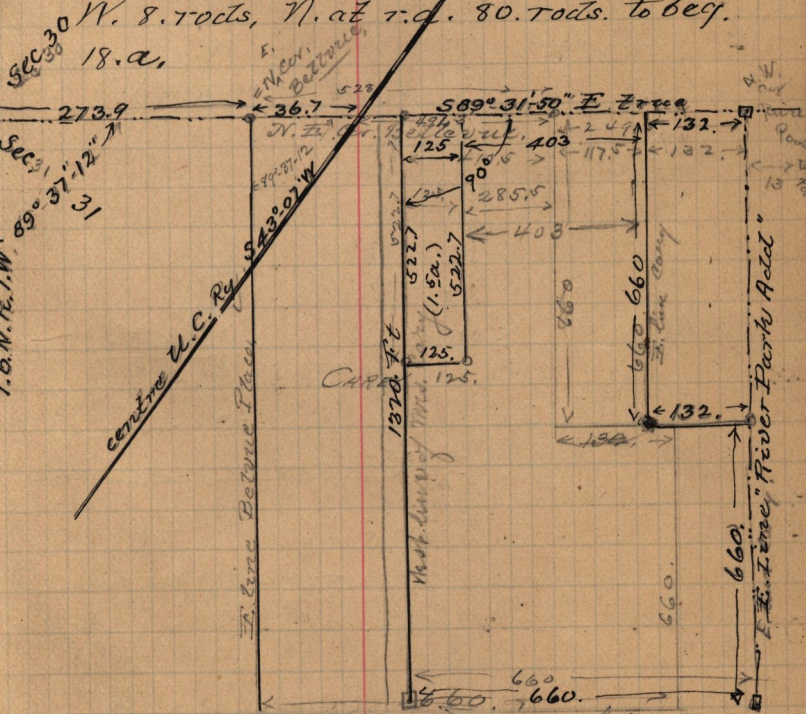


Survey made - Jan. 12 - 1893 -

527. Hamilton Cary to Catherine Cary.  
 April 8<sup>th</sup> 1892 - Part of N. W 1/4 Sec. 31.  
 T. 6. N. R. 1. W. Beg. at point on N. Line  
 of said Sec. and on N. W. Cor. thereof. 8.  
 rods. N. of N. W. cor. "River Park Addition"  
 Thence West 32. rods, along N. line of said  
 Sec. S. at R. a. 80. rods, E. at r. a. 40. rods.  
 N. along River Park Actd. 40. rods,  
 W. 8. rods, N. at r. a. 80. rods. to beg.  
 18. a.



s. written in deed by me, as follows  
 des. Beg. 525. ft. N. of N. W. cor River Park Actd  
 in N. W 1/4 Sec 31, T. 6. N. R. 1. W thence N 125. ft  
 S. at R. a. 522.7 ft E. 125. ft N. 522.7 ft to beg.